



VFG3

3-way control valves

VFG3 is a range of 3-way control valves intended to be used in heating and ventilation systems.

- Size DN15–DN50
- Kvs value 0.63...39
- Rangeability 90:1

The VFG3 valve is designed for use in heating and ventilation systems. It is also suitable for fresh water systems, since it is made of dezincification resistant brass and gunmetal.

The valve is a mixing valve.

Function

3-way valve (VFG3)

Open between port A and port AB when the spindle is in its lowest position (is in this position closed between ports B and AB). Open between port B and port AB when the spindle is in its highest position (is in this position closed between ports A and AB).

See also drawing on page 2.

Actuators

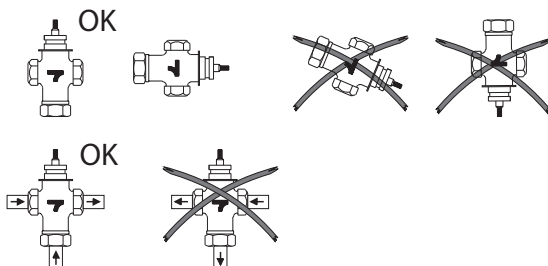
VFG3 are intended for use together with SE5... model actuators.

We offer adapters for all leading actuators in the market.

Installation

The valve is to be mounted according to the flow direction arrows on the valve.

The valve is of a mixing type and must therefore be mounted in the mixing point.



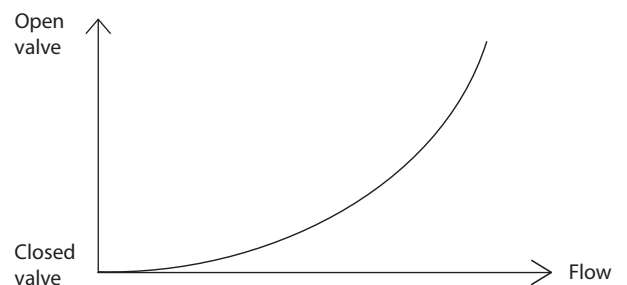
- Media temperature -5...+185°C
- For use in heating and ventilation systems
- Pressure class PN16

Material

The valves have body and plug in gunmetal and spindle in stainless steel. It has O-rings made of Viton.

Flow characteristics

The flow characteristic of the valve is equal percentage, in accordance with the figure below.



Models

Valves	Connection	Kvs	Max. diff. pressure
VFG315-0,63	DN15	0.63	1.6 MPa
VFG315-1,0	DN15	1.0	1.6 MPa
VFG315-1,6	DN15	1.6	1.6 MPa
VFG315-2,1	DN15	2.1	1.6 MPa
VFG315-2,7	DN15	2.7	1.6 MPa
VFG320-4,2	DN20	4.2	1.6 MPa

Valves	Connection	Kvs	Max. diff. pressure
VFG320-5,6	DN20	5.6	1.6 MPa
VFG325-10	DN25	10	1.6 MPa
VFG332-16	DN32	16	1.0 MPa
VFG340-27	DN40	27	0.6 MPa
VFG350-39	DN50	39	0.4 MPa

Technical data

Flow characteristics	Equal percentage
Temperature range	-5...+185°C
Media	Hot, cold or glycol-mixed water and steam
Connection	Female thread
Stroke	20 mm
Max. leakage	0.1 % of kvs
Pressure rating	PN16
Rangeability	90:1

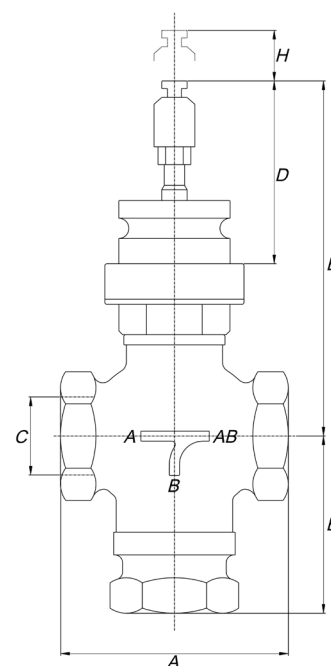
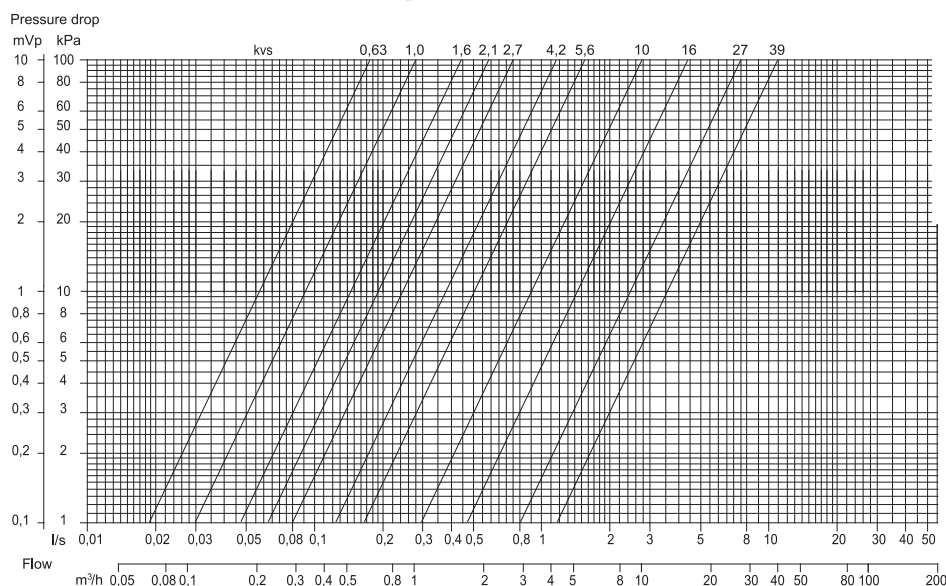
Material

Body and plug	Rg5 (gunmetal SS 5204)
Spindle	Stainless steel
Packing box	O-ring Viton
Thread	The valves have female threaded connections according to ISO 228/1

Dimensions and pressure drop diagram

Model	A	B	C	D	E	H	Weight
VFG315-0,63	70	70	G½"	70	133	20	1.3 kg
VFG315-1,0	70	70	G½"	70	133	20	1.3 kg
VFG315-1,6	70	70	G½"	70	133	20	1.3 kg
VFG315-2,1	70	70	G½"	70	133	20	1.3 kg
VFG315-2,7	70	70	G½"	70	133	20	1.3 kg
VFG320-4,2	80	70	G¾"	70	133	20	1.5 kg
VFG320-5,6	80	70	G¾"	70	133	20	1.5 kg
VFG325-10	90	70	G1"	70	138	20	1.7 kg
VFG332-16	115	80	G1¼"	70	142	20	2.3 kg
VFG340-27	130	80	G1½"	70	147	20	3.3 kg
VFG350-39	160	95	G2"	70	157	20	5.0 kg

Measurements in mm unless otherwise specified.



AB Industrietechnik Srl

Via Julius Durst, 70 - 39042 Bressanone (BZ) - Italy

Tel. +39 0472/830626 - Fax +39 0472/831840

E-mail: info@industrietechnik.it

Homepage: www.industrietechnik.it