



VFTR2/VFTR3

2- and 3-way externally threaded control valve

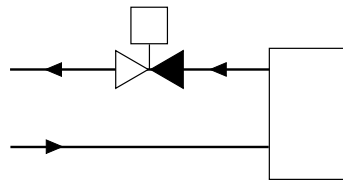
Valves used for control of hot and cold water in climate, heating and ventilation systems. Intended to be used together with the SEZ4 actuators.

- Size DN15...DN25
- Kvs value 0,25...70
- Media temperature 1...+110°C
- Pressure rating PN16
- Rangeability 50:1
- No leakage

Function

2-WAY VALVE

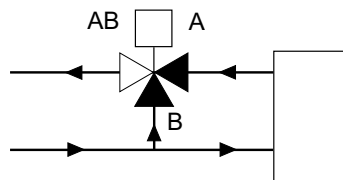
Stem in the lower position, the valve is open between the ports A - AB. Stem in the upper position, the valve is closed between the ports A - AB.



2-WAY VALVE

3-WAY VALVE

Stem in the lower position, the valve is open between the A - AB and closed between the ports B - AB. Stem in the upper position, the valve is closed between the ports A - AB and open between B - AB.



3-WAY VALVE

No leakage in closed position

The valve has O-ring sealing between plug and seat, which makes it completely tight in closed position. This makes the valve very energy-efficient.

Installation

The 3-way valve is of a mixing type and must therefore be mounted in the mixing point.

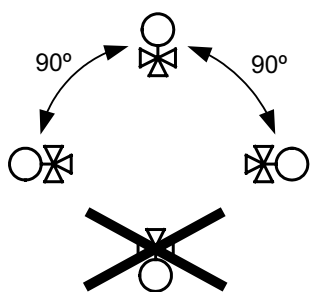
- Before installation of the control valve, ensure that the pipe is clean. Make sure that pipe scale, metal chips, welding slag and other foreign materials are removed.
- For maximum efficiency and minimum wear, install the valve in a vertical position with the stem pointing upward. If the valve is mounted with the actuator on the side, more wear is caused to the valve stuffing box. The valve should never be mounted at an angle of more than 90°.

MAIN OFFICE BRESSANONE

I-39042 Bressanone (BZ)
via Julius-Durst-Str. 50
VAT No. IT02748450216

tel: +39 0472 830626
fax: +39 0472 831840
www.industrietechnik.it

VFTR2/VFTR3



- Install the valve according to the fluid direction arrow shown on the valve.
- Make sure there is ample space above the valve to facilitate easy removal of the valve actuator.
- Fit a strainer/filter upstream of the valve to prolong the equipment's life span.
- A water quality according to VDI 2035 is recommended.

Technical data

Application	Heating systems, fan coil units, cooling systems, ventilation systems
Pressure rating	PN16
Connection actuator	M30 x 1,5
Connection	BSP externally threaded according to ISO 228/1
Flow characteristics	Equal percentage
Max. leakage	0.0 % of kvs
Media	Hot water, cold water, glycol-mixed water (max. 30 % glycol)
Media temperature	1...110 °C (the valve has a max. temperature of 140°C, the SEZ4 actuators have a max. temperature of 110°C)
Rangeability	50:1
Stroke	5.5 mm

Material

Body	Brass CW614N
Seat	Brass CW614N
Plug	Brass CW614N
Stem	Stainless steel 1.4305
Seat packing	EPDM
O-rings	EPDM

2-way valves

Article	Nominal diameter	Connection	Kvs	Max. diff. pressure	Actuator
VFTR215-0.25	DN15	G1/2"	0.25 m³/h	350 kPa	SEZ4
VFTR215-0.4	DN15	G1/2"	0.4 m³/h	350 kPa	SEZ4
VFTR215-0.6	DN15	G1/2"	0.6 m³/h	350 kPa	SEZ4
VFTR215-1.0	DN15	G1/2"	1.0 m³/h	350 kPa	SEZ4
VFTR215-1.6	DN15	G1/2"	1.6 m³/h	350 kPa	SEZ4
VFTR220-2.0	DN20	G3/4"	2.0 m³/h	250 kPa	SEZ4
VFTR220-2.5	DN20	G3/4"	2.5 m³/h	250 kPa	SEZ4
VFTR220-4.0	DN20	G3/4"	4.0 m³/h	150 kPa	SEZ4
VFTR220-6.0	DN20	G3/4"	6.0 m³/h	150 kPa	SEZ4
VFTR225-7.0	DN25	G1"	7.0 m³/h	70 kPa	SEZ4

MAIN OFFICE BRESSANONE

I-39042 Bressanone (BZ)
via Julius-Durst-Str. 50
VAT No. IT02748450216

tel: +39 0472 830626
fax: +39 0472 831840
www.industrietechnik.it

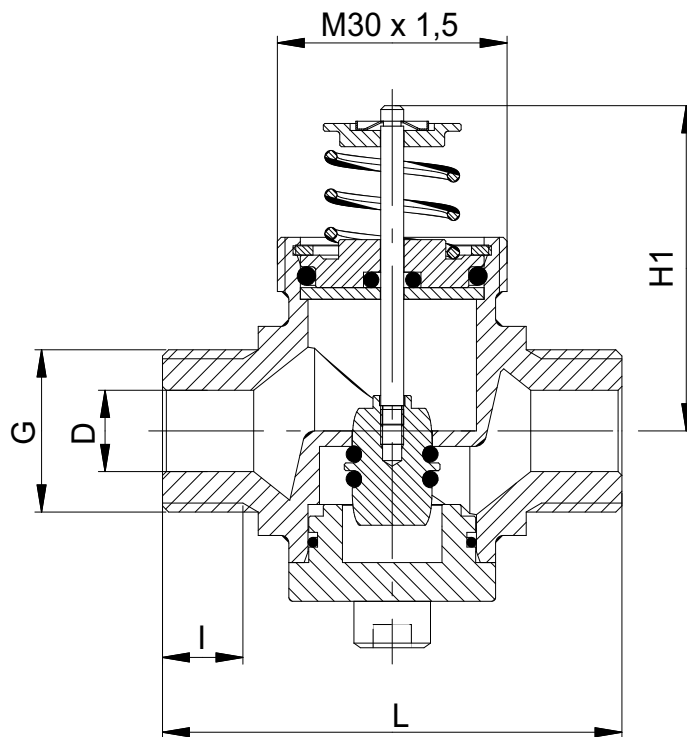
VFTR2/VFTR3

3-way valves

Article	Nominal diameter	Connection	Kvs	Max. diff. pressure	Actuator
VFTR315-0.25	DN15	G1/2"	0.25 m ³ /h	350 kPa	SEZ4
VFTR315-0.4	DN15	G1/2"	0.4 m ³ /h	350 kPa	SEZ4
VFTR315-0.6	DN15	G1/2"	0.6 m ³ /h	350 kPa	SEZ4
VFTR315-1.0	DN15	G1/2"	1.0 m ³ /h	350 kPa	SEZ4
VFTR315-1.6	DN15	G1/2"	1.6 m ³ /h	350 kPa	SEZ4
VFTR320-2.0	DN20	G3/4"	2.0 m ³ /h	250 kPa	SEZ4
VFTR320-2.5	DN20	G3/4"	2.5 m ³ /h	250 kPa	SEZ4
VFTR320-4.0	DN20	G3/4"	4.0 m ³ /h	100 kPa	SEZ4
VFTR320-6.0	DN20	G3/4"	6.0 m ³ /h	100 kPa	SEZ4
VFTR325-7.0	DN25	G1"	7.0 m ³ /h	70 kPa	SEZ4

Dimensions

2-WAY VALVE



Article	Nominal diameter	Connection (G)	D(Ø)	I	L	H1
VFTR215-0.25	DN15	1/2"	12	9	60	42
VFTR215-0.4	DN15	1/2"	12	9	60	42
VFTR215-0.6	DN15	1/2"	12	9	60	42
VFTR215-1.0	DN15	1/2"	12	9	60	42
VFTR215-1.6	DN15	1/2"	12	9	60	42
VFTR220-2.0	DN20	3/4"	15	12,5	60	42
VFTR220-2.5	DN20	3/4"	15	12,5	60	42
VFTR220-4.0	DN20	3/4"	18	12,5	60	42
VFTR220-6.0	DN20	3/4"	18	12,5	60	42
VFTR225-7.0	DN25	1"	22	14	82	47

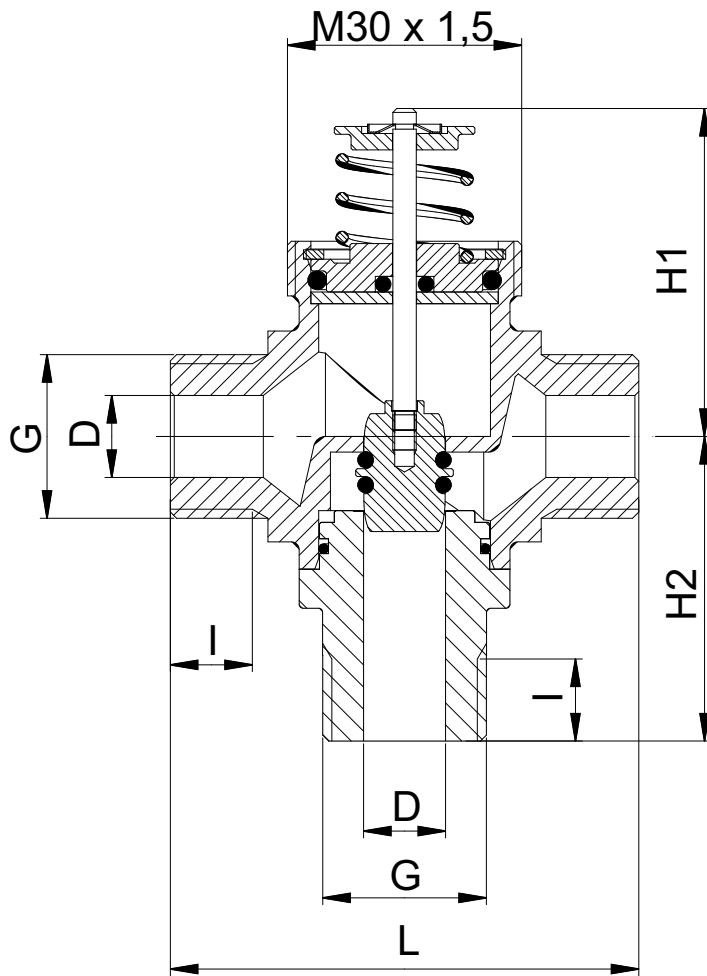
MAIN OFFICE BRESSANONE

I-39042 Bressanone (BZ)
via Julius-Durst-Str. 50
VAT No. IT02748450216

tel: +39 0472 830626
fax: +39 0472 831840
www.industrietechnik.it

VFTR2/VFTR3

3-WAY VALVE



Article	Nominal diameter	Connection (G)	D(Ø)	I	L	H1	H2
VFTR315-0.25	DN15	1/2"	12	9	60	42	40
VFTR315-0.4	DN15	1/2"	12	9	60	42	40
VFTR315-0.6	DN15	1/2"	12	9	60	42	40
VFTR315-1.0	DN15	1/2"	12	9	60	42	40
VFTR315-1.6	DN15	1/2"	12	9	60	42	40
VFTR320-2.0	DN20	3/4"	15	12,5	60	42	50
VFTR320-2.5	DN20	3/4"	15	12,5	60	42	50
VFTR320-4.0	DN20	3/4"	18	12,5	60	42	50
VFTR320-6.0	DN20	3/4"	18	12,5	60	42	50
VFTR325-7.0	DN25	1"	22	14	82	47	44

MAIN OFFICE BRESSANONE

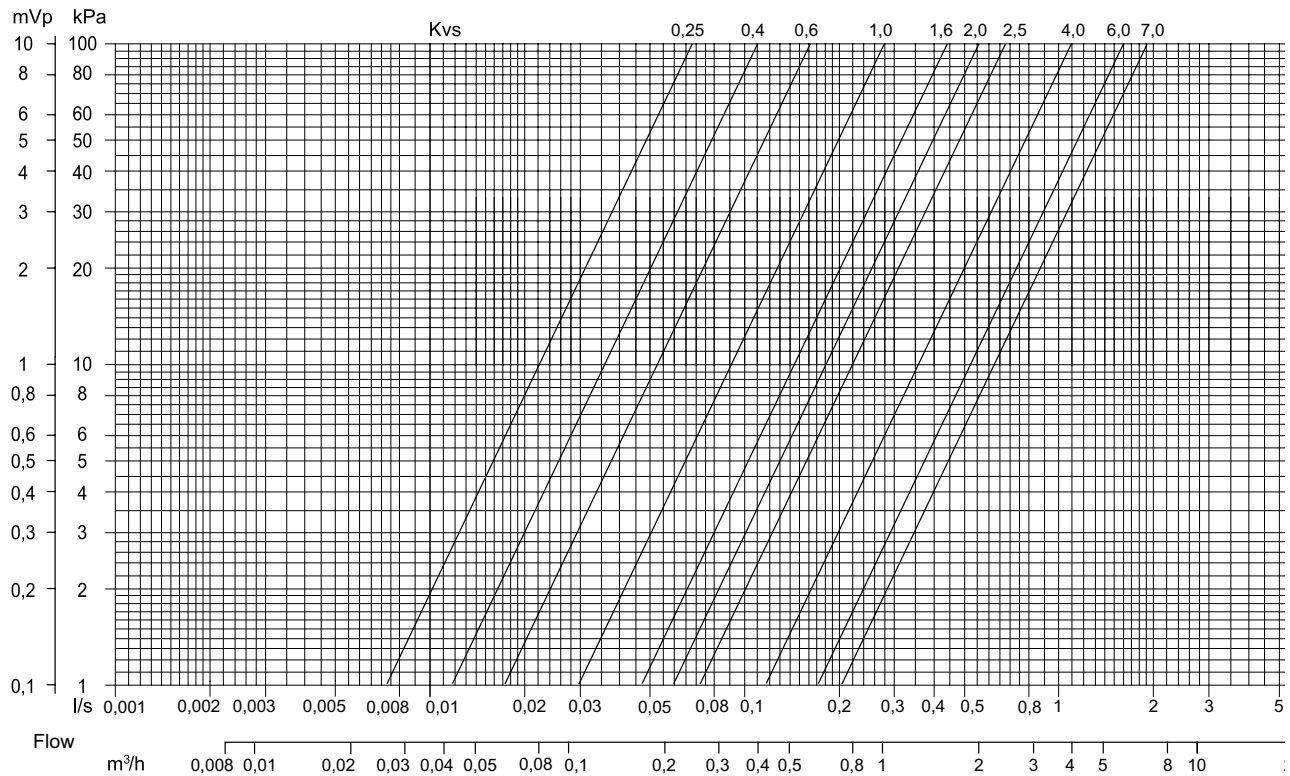
I-39042 Bressanone (BZ)
via Julius-Durst-Str. 50
VAT No. IT02748450216

tel: +39 0472 830626
fax: +39 0472 831840
www.industrietechnik.it

VFTR2/VFTR3

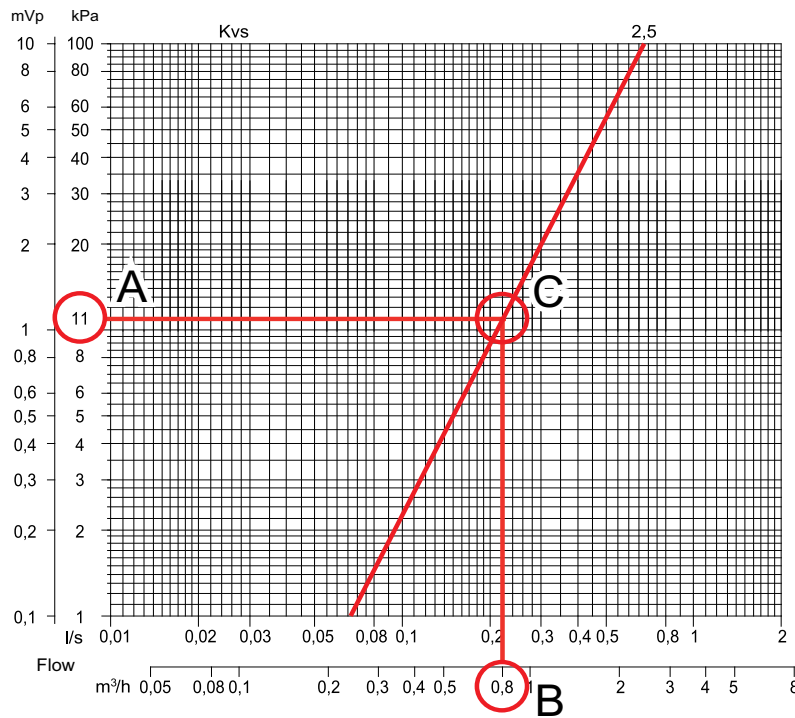
Pressure drop curves

Pressure drop



EXAMPLE: CALCULATION OF KV VALUE

If the pressure drop is 11 kPa (A) and the flow is 0.8 m³/h (B), the kv value is 2.5 (C). See the markings in the picture to the right.



.....

MAIN OFFICE BRESSANONE

I-39042 Bressanone (BZ)
via Julius-Durst-Str. 50
VAT No. IT02748450216

tel: +39 0472 830626
fax: +39 0472 831840
www.industrietechnik.it

VFTR2/VFTR3